



MILLENNIUM TOWER

440 - 2nd Ave | CALGARY, AB



PROPERTY INFORMATION

OPERATING COSTS

\$21.90 per square foot (2023)

PARKING RATIO

One stall per 2,000 square feet

TELECOM PROVIDERS

Telus, Bell, Shaw, Enmax Envision, Allstream

PARKING RATE

\$585 per month (reserved)

\$495 per month (unreserved)

6'5" Clearance

SURROUNDING AMENITIES

- ① Impark Parking
- ② LOCAL Pub
- ③ Garage Sports Bar
- ④ JOEY Eau Claire
- ⑤ Taste Café
- ⑥ Caesar's Steak House & Lounge
- ⑦ Sheraton Suites Eau Claire
- ⑧ Good Earth Coffeehouse – Eau Claire Market
- ⑨ Café Artigiano
- ⑩ The Westin Calgary
- ⑪ Kid's & Company
- ⑫ Tim Horton's



BUILDING AMENITIES

All amenities are exclusively for tenant use and carry no additional cost.



Fitness Center

Located on the 2nd floor, this facility includes club-quality changing rooms, free towel service, and the latest cardio and weight machines. Open 24/7.



Conference Facility

Located on the 2nd floor, the conference facility can seat up to 100 people and can also divide into smaller spaces. The facility is equipped with the latest audio-visual technology.



Tenant Lounge & Patio

Located on the 2nd floor, the lounge is open to all tenants during business hours and bookable for private functions. It is equipped with a ping-pong table, pool table, foosball table, Xbox and gaming center for tenants to enjoy. The outdoor patio is located on the 3rd floor, making it the perfect spot for a casual meeting or quick lunch.



Bicycle Storage

Secure bike storage and shower facilities are available on the first floor of the parkade for tenants to use upon arrival.



Car Wash

Self-serve car wash is available on the third floor of the parkade for tenants to use.



ASPEN
CLUB

This premier offering of the Aspen Club is exclusively for the tenants of any Aspen Properties owned building in Calgary or Edmonton. Tenants in Millennium Tower gain access to multiple fitness facilities, tenant lounges, libraries, and more.

Over 90,000 square feet of amenities spread across eight centrally located buildings will elevate the experience and value of your daily life.

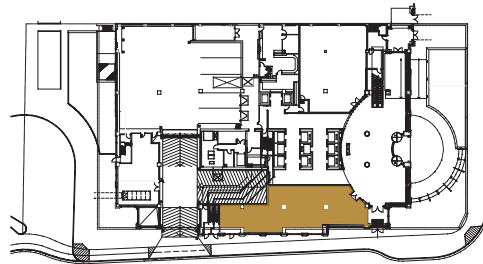
For more information and to join the Aspen Club, visit:

[aspenproperties.ca/club](https://www.aspenproperties.ca/club)

AVAILABLE SUITES

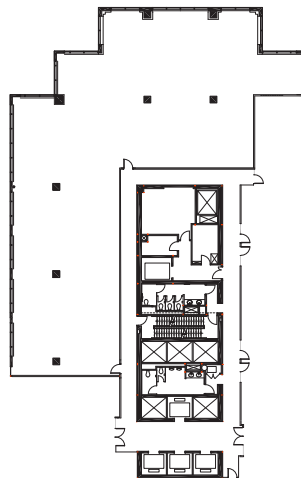
#100 | 2,802 sf

Available Immediately



#360 | 7,859 sf

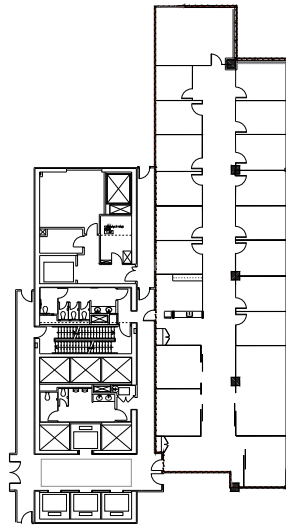
Available Immediately



AVAILABLE SUITES

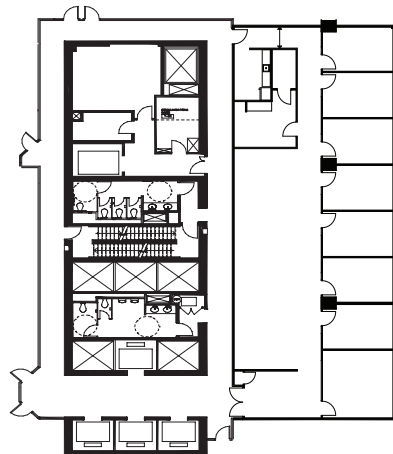
#560 | 5,874 sf

Available Immediately



#730 | 5,552 sf

New show suite coming soon



ANDREW DOMMETT

Leasing Manager

403.470.2847

adommett@aspenproperties.ca

